

Stormwater Management FlowCharts - Development Types and Key

Development Type	Site slope/ Site drains to	Control Type
1	Front boundary	E, G
	Rear boundary	B, C, D, E, G
2	Front boundary	A*, F**
	Rear boundary	A+, B***, C, D, F**
3, 4, 4a	Front boundary	A, D++, F
	Rear boundary	A+, B***, C, D++, F
5, 6, 7, 8, 9	Front boundary	A, D++, F, H
	Rear boundary	A+, B***, C, D++, F, H
2, 3, 4, 4a, 5, 6, 7, 8, 9	Waterfront property or site drains to a public reserve or park	E, F, H

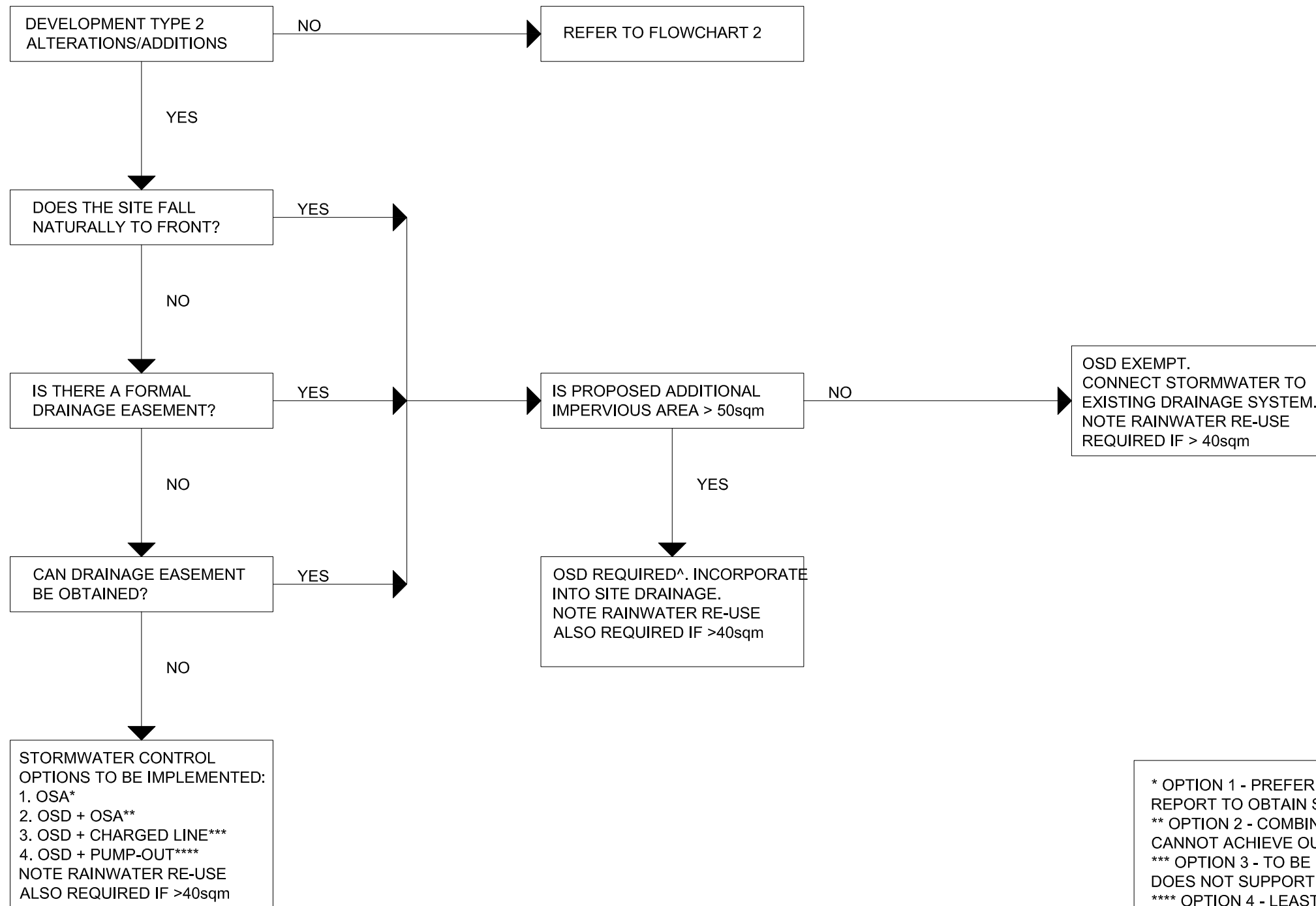
Key:

Development Type


- 1 - Demolition Only
- 2 - Alterations and additions
- 3 - New dwelling with existing footpath along frontage
- 4 - New dwelling with no existing footpath
- 4a - Dual occupancy, town homes etc.
- 5 - Residential Flat Building (RFB), commercial and mixed developments
- 6 - Development under SEPP Housing for Seniors or People with a Disability
- 7 - Substantial Development
- 8 - Sub-division of one into two allotments
- 9 - "Greenfields" site, sub-division of more than two allotments

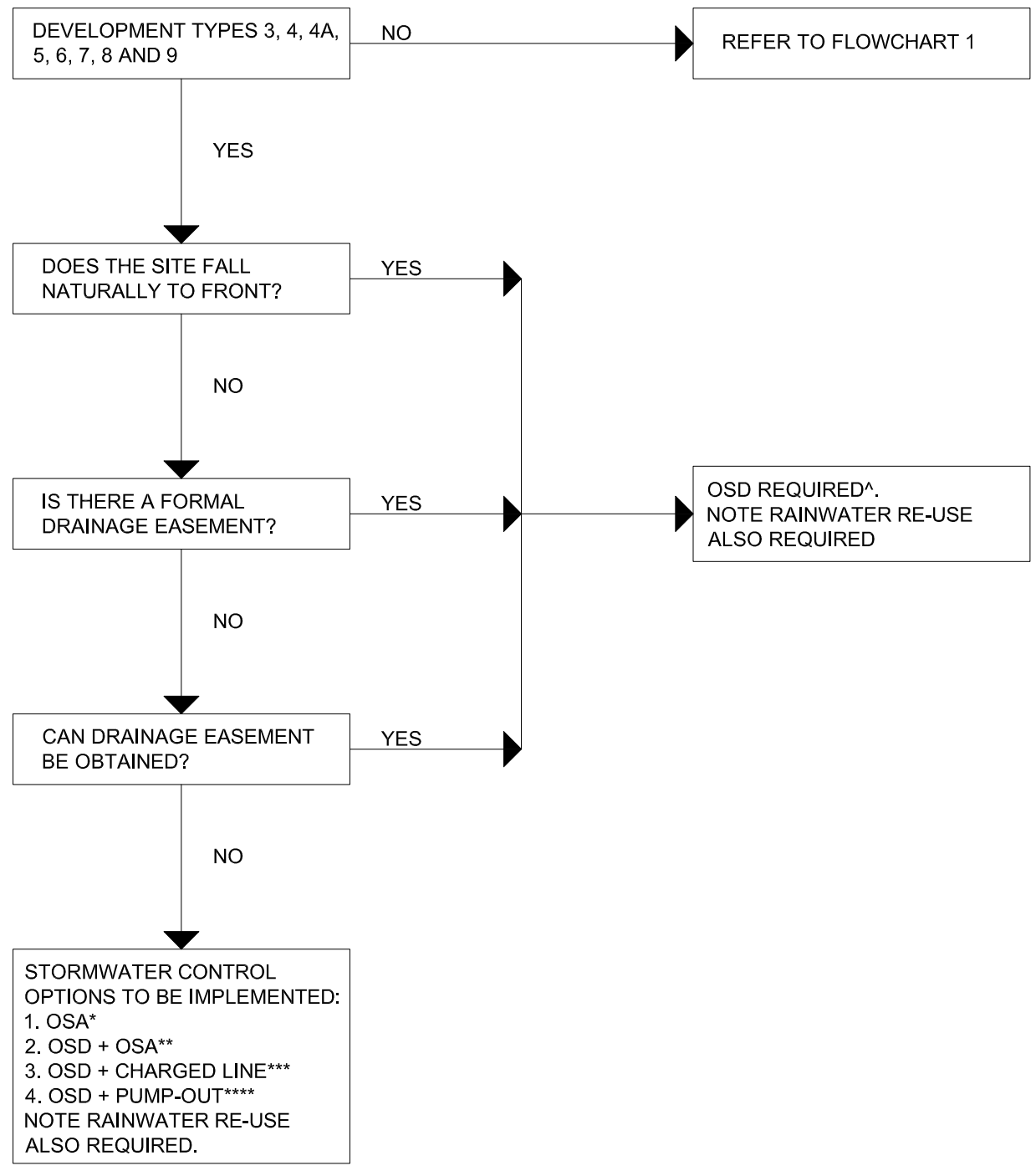
Stormwater Control System

- A - On-site Stormwater Detention System (OSD)
- B - On-site Retention System or absorption system (OSA)
- C - "Charged" system
- D - Mechanical Pump-out System
- E - Scour and erosion control system/devices
- F - Rainwater Re-use System
- G - Sediment Pond
- H - Water Sensitive Urban Design (WSUD)




* OPTION 1 - PREFERRED OPTION REQUIRES A GEOTECH REPORT TO OBTAIN SOIL INFILTRATION RATE.
 ** OPTION 2 - COMBINED OSD AND OSA IF OSA ALONE CANNOT ACHIEVE OUTCOME.
 *** OPTION 3 - TO BE CONSIDERED IF GEOTECH REPORT DOES NOT SUPPORT OSA.
 **** OPTION 4 - LEAST PREFERRED OPTION. WOULD ONLY BE CONSIDERED IF OSA AND CHARGED LINE NOT POSSIBLE.
 ^ OSD WILL NOT BE REQUIRED WHERE DISCHARGE IS DIRECTLY TO THE BAY E.G. WATERFRONT PROPERTIES. HOWEVER WATER QUALITY CONTROL INCLUDING WSUD REQUIRED.

	CHECKED		SURVEY:	DESIGNED:	CITY OF CANADA BAY COUNCIL 	PLAN
	CHECKED		SCALE:	DRAWN:		FLOWCHART 1 - TYPE 2 DEVELOPMENT ALTERATIONS AND ADDITIONS
	CHECKED		DATE:	DATUM:		
AMENDMENTS						



* OPTION 1 - PREFERRED OPTION REQUIRES A GEOTECH REPORT TO OBTAIN SOIL INFILTRATION RATE.
 ** OPTION 2 - COMBINED OSD AND OSA IF OSA ALONE CANNOT ACHIEVE OUTCOME.
 *** OPTION 3 - TO BE CONSIDERED IF GEOTECH REPORT DOES NOT SUPPORT OSA.
 **** OPTION 4 - LEAST PREFERRED OPTION. WOULD ONLY BE CONSIDERED IF OSA AND CHARGED LINE NOT POSSIBLE.
 ^ OSD WILL NOT BE REQUIRED WHERE DISCHARGE IS DIRECTLY TO THE BAY E.G. WATERFRONT PROPERTIES. HOWEVER WATER QUALITY CONTROL INCLUDING WSUD REQUIRED.

	CHECKED		SURVEY:	DESIGNED:	CITY OF CANADA BAY COUNCIL 	PLAN	
	CHECKED		SCALE:	DRAWN:		FLOWCHART 2 - TYPES 3, 4, 4A, 5, 6, 7, 8, 9 DEVELOPMENTS	A3
AMENDMENTS	CHECKED		DATE:	DATUM:			