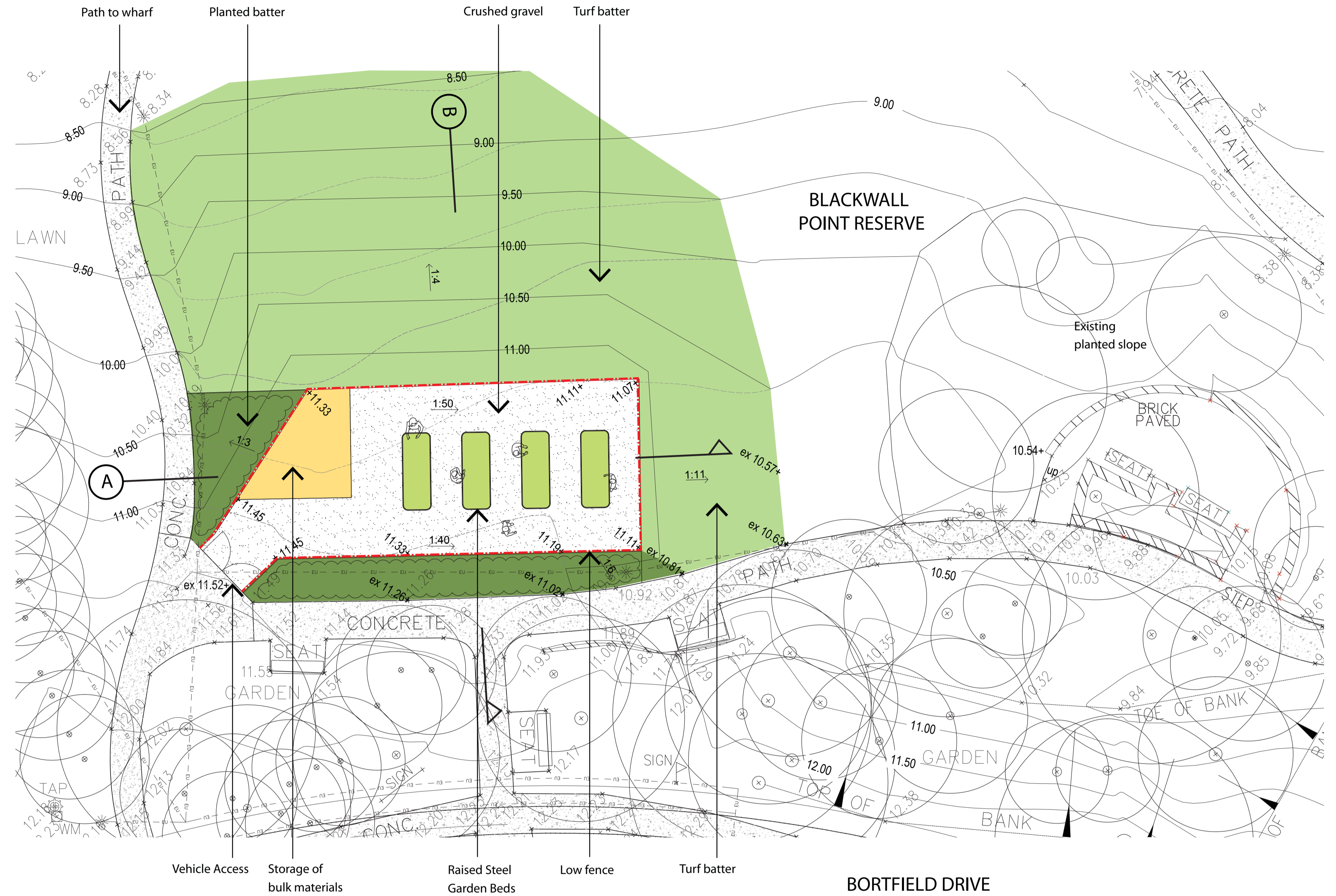


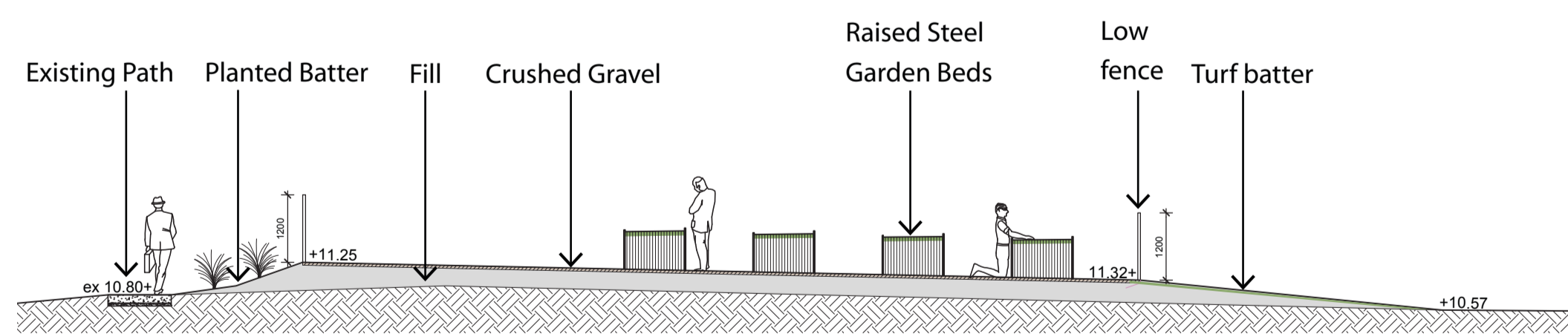
Community Garden Trial for Blackwall Point Reserve

Works proposed

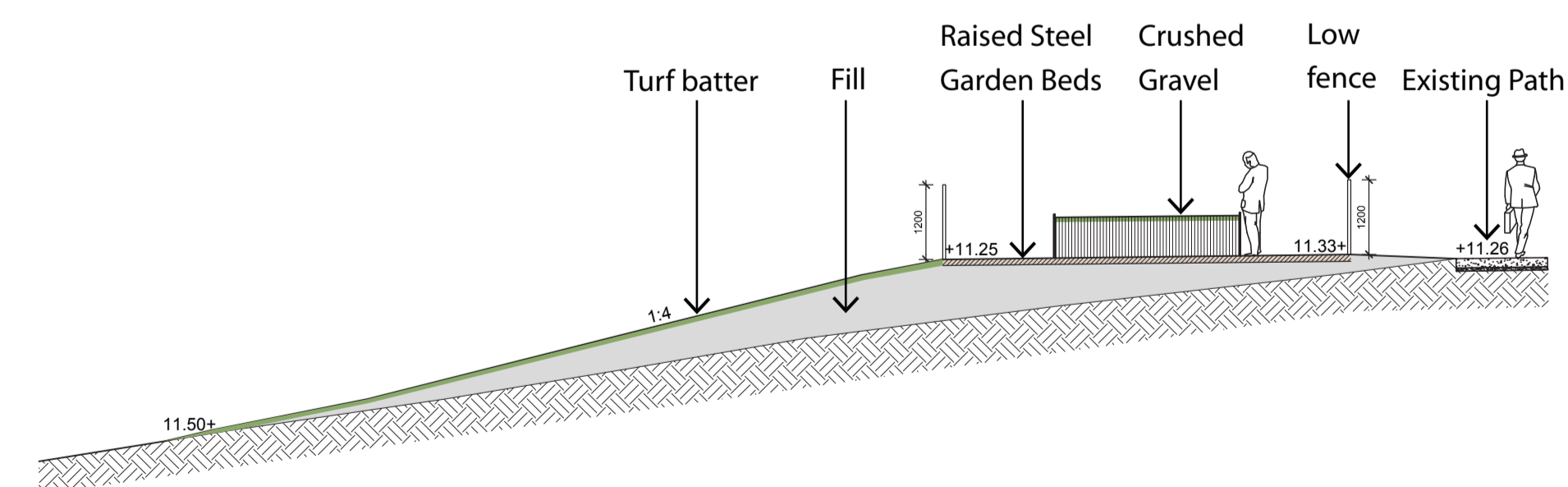
- Level an area at the top of the slope to create space for garden beds
- Regrade and returf slope to allow 1:4 batter
- Provide area for bulk materials storage
- Provide low fencing to enclose garden area
- Use ground cover planting on steep batters surrounding community garden
- Drainage and water service
- Provide interpretive signage
- Establish pilot gardens



3 PLAN - TRIAL GARDEN
Scale 1:200 at A3



4 SECTION A
Scale: 1:200 at A3



5 SECTION B
Scale: 1:200 at A3

