

## YARALLA OH&S SITE INDUCTION

### Yaralla Bushcare

#### Bushcare guidelines

Bushcare Volunteers will work on this site twice a month for 3 hours. Volunteers are to adhere to this action plan and are to be supervised by Council Bushcare at all times.

In order to participate Volunteers are required to have registered in the Canada Bay Council Bushcare program, follow Safe Work Method Statements and adhere to safe operating procedures. Canada Bay Councils insurance covers people between the ages of 10 and 90. Children under the age of 15 must be accompanied by their parents.

#### Objectives

- Preserve ecologically significant good-condition bush and improve the overall condition of the site.
- Promote the further expansion of good-condition, resilient bushland into weed-infested areas and paddock.
- Contain and eradicate patches of weed infestation impacting on good bush.
- Minimise and protect from harmful effects including; edge effects, weed invasion, over-clearing, excess trampling and gradual senescence.

#### Site description

The Yaralla Bushcare Group work in a large area of bushland containing an endangered ecological community (EEC) known as Sydney Turpentine Ironbark Forest (STIF). STIF was once widespread in the City of Canada Bay, however there are now only tiny pockets of this precious vegetation remaining in the western suburbs of Sydney.

#### General strategies

- Phytophthora hygiene protocol adopted when working at the site. Phytophthora cinnamomi is a soil-borne water mould that produces an infection which causes a condition in plants called "root rot" or "dieback". Tools and work boots that are in contact with the soil should be sprayed with a solution of methylated spirits (70%) and water (30%) before the entering the reserve. Council staff will supply the spray solution.
- Comprehensively target all flowering and seeding weed species on site subject to flowering times throughout the year. Annual Environmental weeds are to be a priority.
- Work is to be carried out from good to bad areas (Bradley Method). Expansion into new areas should be cautious and dependant on rates of regeneration and weed control.
- Regular discussion and feedback to be carried out with Bushcare Volunteers
- Control priority weeds such as vines, in line with BioSecurity legislation. Emphasis given to Boneseed, Cat's Claw, Madeira and Balloon Vines. Dispose of 'Eradication' weeds on-site, e.g. Boneseed.
- Remove herbaceous weeds such as Briza minor, Paspalum, Pigeon grass, Bidens, Ehrharta and Onion weed

- Removal of woody weeds required such as Ochna, Privet, African olive, Cestrum and Celtis. Removal of Lantana should be strategic as Lantana is a good habitat for small birds. Please speak with Supervisor before removing Lantana. Boneseed is also a priority and should be targeted.
- Natural regeneration to be prioritised over planting in area.
- Seed collection to occur as directed by Supervisor.

## Checklist for council staff and bush regeneration contractors

- Canada Bay Council Bushcare Team - 9911 6383 / 0414 563 546
- Canada Bay Council Customer Services - 9911 6555
- Deborah Jenkins - Sydney Local Health District - Facility Planner - 0423 294 110

## Site details / boundaries - See Map 1 and 2

## Parking

- Zone 2, Western section - The Drive or Colane St, Concord West (Timed Parking)
- Zone 1, Eastern section - behind Concord RSL off Nullawarra Ave, Concord West

## NSWFB Contact

Concord Fire Station, 153 Concord Rd, North Strathfield NSW 2137 - Phone **000**

## Emergency assembly point

Arthur walker reserve (Indicated on map)

**Toilets:** Majors Bay Reserve, near car park.

**First aid kit location:** On site or in Ute

## Location of eye wash and water

Arthur Walker Reserve - First aid kit.

## Nearest Medical Facility

Concord Hospital - Hospital Rd, Concord West - Phone **9767 5000**

## Council Medical Centre

85 Burwood Road, Burwood - Phone **9747 4344**

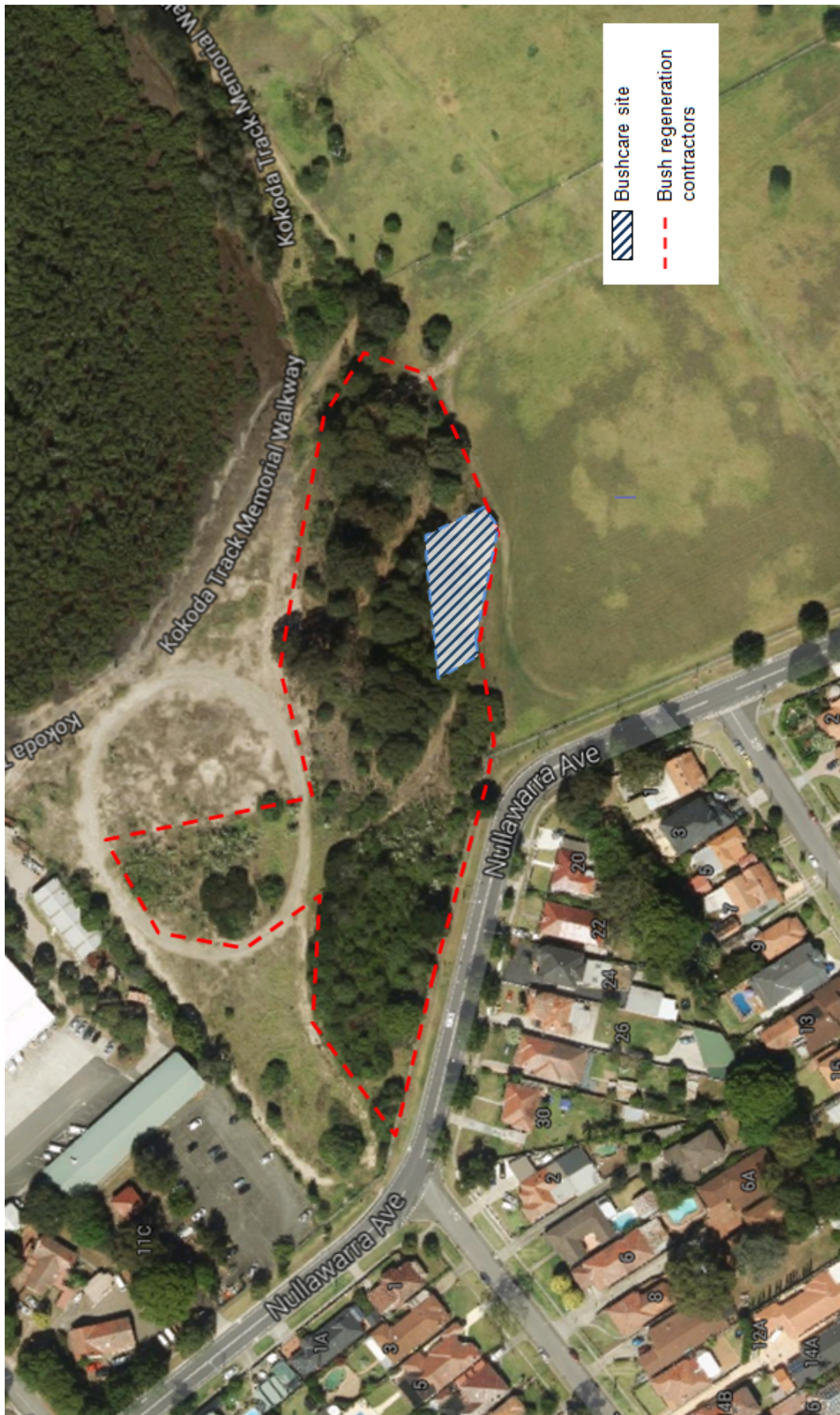


## Zone 1: Yaralla site map – Saturday workday eastern section





## Zone 2: Yaralla site map – Thursday workday western section



## Native Plants

1 – Zone 1 = Eastern Section

2 – Zone 2 = Western Section

√ - Species listed of regional conservation significance in Urban Bushland Biodiversity Survey (UBBS; NSW National Park and Wildlife Service: 2007)

Botanic Name	Significant UBBS	Zones
<i>Acacia decurrens</i>		1, 2
<i>Acacia falcate</i>		1,2
<i>Acacia longifolia</i>		2
<i>Acacia parramattensis</i>		1,2
<i>Acacia suaveolens</i>		1
<i>Acacia stricta</i>	√	2
<i>Angophora floribunda</i>		1,2
<i>Aristida vagans</i>		2
<i>Austrodanthonia pilosa</i>		2
<i>Austrodanthonia setacea</i>		2
<i>Austrodanthonia setacea</i>		2
<i>Austrostipa rudis subsp. Nervosa</i>		2
<i>Austrostipa rudis subsp. nervosa</i>	√	1,2
<i>Billardiera scandens</i>		1
<i>Breynia oblongifolia</i>		1
<i>Brunoniella australis</i>		1
<i>Bursaria spinose</i>		1,2
<i>Calotis lappulacea</i>		2
<i>Cassinia arcuate</i>		2
<i>Cassinia arcuate</i>		2
<i>Casuarina glauca</i>		1, 2
<i>Cassytha pubescens</i>		1
<i>Centella asiatica</i>		1,2
<i>Cheilanthes sieberi subsp. sieberi</i>		2
<i>Clematis glycinoides</i>		1
<i>Commelina cyanea</i>		1,2
<i>Cotula australis</i>		1
<i>Dianella caerulea</i>		1,2
<i>Dianella revoluta</i>		1,2
<i>Dichelachne micrantha</i>		1
<i>Dichelachne rara</i>		1
<i>Dichondra repens</i>		1,2
<i>Dodonaea triquetra</i>		2
<i>Echinopogon caespitosus</i>		1,2
<i>Einadia hastata</i>		1,2
<i>Einadia nutans</i>	√	2
<i>Elaeocarpus reticulatus</i>		1

Botanic Name	Significant UBBS	Zones
<i>Entolasia marginata</i>		2
<i>Entolasia stricta</i>		1
<i>Eucalyptus acmenoides</i>		2
<i>Eucalyptus crebra</i>		1
<i>Eucalyptus fibrosa</i>		1,2
<i>Eucalyptus globoidea</i>		1
<i>Eucalyptus moluccana</i>		1
<i>Eucalyptus paniculata</i>		1,2
<i>Eucalyptus punctata</i>		1
<i>Eustrephus latifolius</i>		1
<i>Exocarpos cupressiformis</i>		1
<i>Glycine clandestina</i>		2
<i>Glycine microphylla</i>	√	2
<i>Goodenia hederacea</i>		1
<i>Goodenia heterophylla</i>		1
<i>Goodenia ovata</i>		1
<i>Hardenbergia violacea</i>		1
<i>Hydrocotyle peduncularis</i>		1,2
<i>Hypolepis muelleri</i>		2
<i>Imperata cylindrica</i>		1,2
<i>Juncus usitatus</i>		2
<i>Kennedia rubicunda</i>		2
<i>Kunzea ambigua</i>		1
<i>Lepidosperma gunnii</i>	√	1
<i>Leucopogon juniperinus</i>	√	1
<i>Lomandra filiformis ssp. filiformis</i>		1,2
<i>Lomandra longifolia</i>		1
<i>Logania albiflora</i>		1
<i>Maytenis sylvestrii</i>		2
<i>Melaleuca nodosa</i>		1,2
<i>Melaleuca styphelioides</i>		1
<i>Mersine variabilis</i>		1
<i>Microlaena stipoides</i>		1,2
<i>Muellerina eucalyptoides</i>		1,2
<i>Notelaea longifolia</i>		1
<i>Oplismenus aemulus</i>		1
<i>Oxalis exilis</i>		1
<i>Ozothamnus diosmifolius</i>		2
<i>Pandorea pandorana</i>		1
<i>Panicum simile</i>		1
<i>Passiflora herbertiana ssp. herbertiana</i>		1,2
<i>Paspalidium criniforme</i>	√	2

Botanic Name	Significant UBBS	Zones
<i>Paspalidium distans</i>		1
<i>Pittosporum revolutum</i>		1
<i>Pittosporum undulatum</i>		1,2
<i>Poa affinis</i>		1,2
<i>Polyscias sambucifolius</i>		1
<i>Pomax umbellata</i>		1,2
<i>Poranthera microphylla</i>		1,2
<i>Phyllanthus gastroemii</i>		2
<i>Platylobium formosum</i>	√	1
<i>Pratia purpurascens</i>		1,2
<i>Pseuderanthemum variabile</i>		2
<i>Scaevola albida</i> var. <i>albida</i>		1
<i>Smilax glycyphylla</i>		1
<i>Stackhousia viminea</i>		2
<i>Stipa pubescens</i>		1
<i>Stipa rudis</i> subsp. <i>Nervosa</i>	√	2
<i>Syncarpia glomulifera</i>		1,2
<i>Tetragonia tetragonioides</i>		1
<i>Themeda triandra</i>		1,2
<i>Tylophora barbata</i>		1
<i>Veronica plebeia</i>		1,2
<i>Wahlenbergia gracilis</i>		1,2
<i>Zieria smithii</i>		2

## Weed species

Scientific name	Common Name
<i>Acetosa sagittata</i>	Turkey Rhubarb
<i>Agapanthus orientalis</i>	Lilly of the Nile
<i>Agave</i> sp.	Agave
<i>Anredera cordifolia</i>	Madeira Vine
<i>Araujia sericifera</i>	Moth Vine
<i>Asparagus aethiopicus</i>	Asparagus Fern
<i>Asparagus plumosus</i>	Climbing Asparagus Fern
<i>Avena fatua</i>	Common Oats
<i>Axonopus fissifolius</i>	Carpet Grass
<i>Bidens pilosa</i>	Cobblers Pegs
<i>Brassica fruticulosa</i>	Twiggy Turnip
<i>Briza maxima</i>	Blowfly Grass
<i>Briza minor</i>	Quaky Grass
<i>Bromus catharticus</i>	Prairie Grass
<i>Cardiospermum grandiflorum</i>	Balloon Vine
<i>Celtis Australia</i>	Lote Tree
<i>Cestrum parqui</i>	Green Poisonberry
<i>Centaurium Erythraea</i>	Common Centuary
<i>Chrysanthemoides monilifera</i> subsp. <i>monilifera</i>	Boneseed
<i>Cinnamomum camphora</i>	Camphor Laural
<i>Cotoneaster</i> spp.	Cotoneaster
<i>Conyza bonariensis</i>	Fleabane
<i>Cynodon dactylon</i>	Common Couch
<i>Echium plantagineum</i>	Patersons Curse
<i>Ehrharta erecta</i>	Panic Veldtgrass
<i>Erythrina crista-galli</i>	Coral Tree
<i>Euphorbia peplus</i>	Milkweed
<i>Foeniculum vulgare</i>	Fennell
<i>Grevillea robusta</i>	
<i>Hypochaeris radicata</i>	Catsear
<i>Ipomea indica</i>	Blue Morning Glory
<i>Lantana camara</i>	Lantana
<i>Ligustrum lucidum</i>	Large Leaf Privet
<i>Ligustrum sinensis</i>	Small Leaf Privet
<i>Lilium formosum</i>	Taiwan Lilly
<i>Lonicera japonica</i>	Honeysuckle
<i>Lolium perenne</i>	Ryegrass
<i>Macfadyena unguis-cati</i>	Cats-claw Creeper
<i>Madiola caroliniana</i>	Red-flowered Mallow
<i>Melia azederach</i>	White Cedar
<i>Nandina domestica</i>	Sacred Bamboo



Scientific name	Common Name
<i>Nephrolepis cordifolia</i>	Fishbone Fern
<i>Ochna serrulata</i>	Mickey mouse plant
<i>Olea europaea</i> ssp.	Africana African Olive
<i>Paronychia brasiliensis</i>	Nailwort
<i>Passiflora edulis</i>	Passionfruit
<i>Pavonia hastata</i>	Pink Pavonia
<i>Paspalum dilatatum</i>	Paspalum
<i>Petrorhagia dubia</i>	Velvet Pink
<i>Pennisetum clandestinum</i>	Kikuyu
<i>Phytolacca octandra</i>	Inkweed
<i>Plantago lanceolata</i>	Lambs Tongue
<i>Polycarpon tetraphyllum</i>	Four-leaf Allseed
<i>Polygala myrtifolia</i>	Myrtle-leaf Milkwort
<i>Protasparagus aethiopicus</i>	Asparagus Fern
<i>Pyrocantha angustifolia</i>	Indian Hawthorn
<i>Reinwardtia indica</i>	
<i>Rubus fruticosus</i>	Blackberry
<i>Salpichroa organifolia</i>	Pampas Lily of the Valley
<i>Senna pendula</i> var. <i>glabra</i>	Senna
<i>Senecio madagascariensis</i>	Fireweed
<i>Setaria</i> sp.	Pigeon Grass
<i>Sida rhombifolia</i>	Paddy's Lucerne
<i>Solanum mauritanium</i>	Tobacco Bush
<i>S. nigrum</i>	Blackberry Nightshade
<i>S. pseudocapasicum</i>	Madiera Winter Cherry
<i>Silene gallica</i>	French Catchfly
<i>Sonchus oleraceus</i>	Common sowthistle
<i>Sporobolus africanus</i>	Parramatta Grass
<i>Stachys arvensis</i>	Stagger Weeds
<i>Stellaria media</i>	Chickweed
<i>Stenotaphrum secundatum</i>	Buffalo Grass
<i>Taraxacum officinale</i>	Dandelion
<i>Tradescantia fluminensis</i>	Wandering Jew
<i>Trifolium repens</i>	White Clover
<i>Verbena bonariensis</i>	Purple top
<i>V. orientalis</i>	Purple top
<i>Vinca major</i>	Blue Periwinkle
<i>Watsonia meriana</i> cv. <i>Bulbillifera</i>	Watsonia