

BUSHCARE SITE ACTION PLAN

Sisters Bay and Half Moon Bay

Site description

Situated in the foreshore area of Iron Cove in Drummoyne, the Sisters Bay Bushcare Group is one of the largest and longest running Bushcare Groups in the City of Canada Bay Council. The group work in the narrow band of remnant and planted coastal sandstone vegetation that fringes both Sisters Bay and Half Moon Bay., as well as the Saltmarsh patches that grow behind the bays extensive mangrove forests.

Bushcare Guidelines

Bushcare Volunteers will work on this site once a month for 3 hours. Volunteers are to adhere to this action plan and are to be supervised by Council Bushcare at all times.

In order to participate Volunteers are required to have registered in the Canada Bay Council Bushcare program, follow Safe Work Method Statements and adhere to safe operating procedures. Canada Bay Councils insurance covers people between the ages of 10 and 90. Children under the age of 15 must be accompanied by their parents.

Objectives

The main objective of work carried out on this site is to increase biodiversity and manage Environmental and Noxious weeds as well as assist in creating habitat for fauna. Particular care must be taken during weeding to ensure over clearing does not occur.

General Strategies

- Comprehensively target all flowering and seeding weed species on site subject to flowering times throughout the year. Annual Environmental weeds are to be a priority.
- Work is to be carried out from good to bad areas (Bradley Method). Expansion into new areas should be cautious and dependant on rates of regeneration and weed control.
- Plant suitable known local provenance indigenous plants.
- Regular discussion and feedback to be carried out with Bushcare Volunteers
- Seed collection to occur as directed by Supervisor.

Area specific strategies

Brett Park - Map 1

Site 1a

- Regeneration of this area should be viewed as a long term process.
- Removal of herbaceous weeds such as Couch, Summer grass, Ehrharta, Asthma weed, Bidens, Crows foot grass.

Site 1b

- Regeneration of this area should be viewed as a long term process.
- Removal of herbaceous weeds such as Couch, Summer grass, Ehrharta, Asthma weed, Bidens, Crows foot grass.
- Care must be taken when working in bushland area adjacent to Henley Marine Drive as the slope is quite steep – volunteers are not to work within 3m of Henley Marine Drive footpath. This 3m area is maintained by council staff.
- Areas of herbaceous weeds along slope such as *Ehrharta erecta* that are removed will be replaced with planted/transplanted native ground covers.

Sisters Bay - Map 2

Site 2

- Care to be taken working in area. On the weekend the Bay run is busy with pedestrians and cyclist – be mindful when on the bay run.
- Work will involve planting and weeding of herbaceous weeds. Work carried out down to the silt fence – no work is to be done beyond the silt fence.
- Rubbish to be collected from site as required.
- Council Bushcare staff to remove dead trees or shrubs from site and generally keep clean.

Thompson Street - Map 3

Site 3

- Care to be taken working in area. On the weekend the Bay run is busy with pedestrians and cyclist – be mindful when on the bay run.
- The site drops off at approx 4-5m from the Henley Marine Drive fence – volunteers will work up to 1m of this edge.
- The site has a healthy stand of native ground covers and shrubs. Weeds are scattered through the site such as Trad, Ehrharta and Thistles. Removal of these and other weeds is required.

Existing Species List

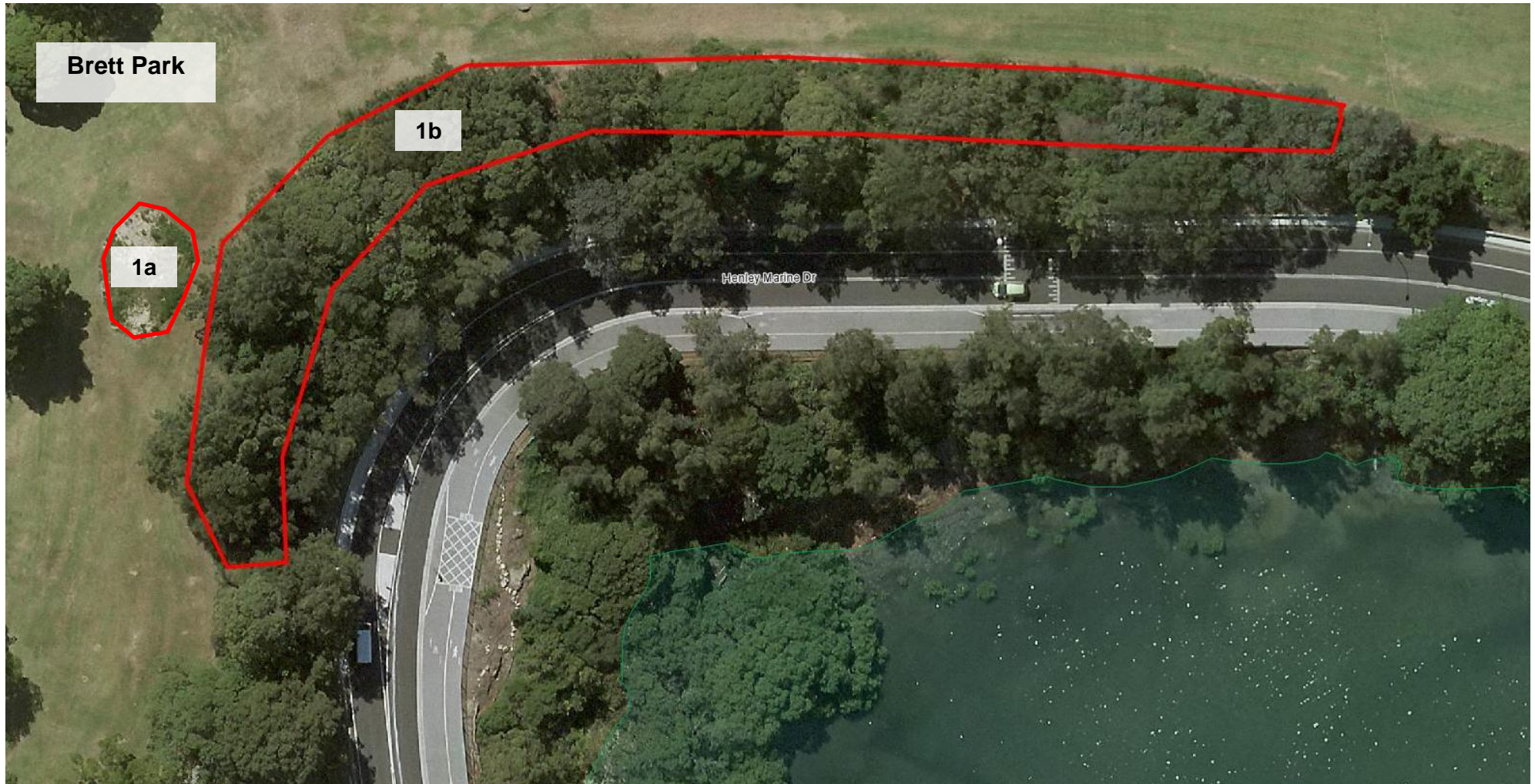
Native Plants

Botanical Name	Common Name
<i>Acacia suaveolens</i>	Sweet wattle
<i>Banksia sp.</i>	
<i>Casuarina glauca</i>	She oak
<i>Commelina cyanea</i>	Scurvy weed
<i>Cotula sp.</i>	Common Cotula
<i>Dianella caerulea</i>	Blue Flax
<i>Dianella revolute</i>	Blue Flax Lily
<i>Hakea sp.</i>	Hakea
<i>Imperata cylindrica</i>	Bladey Grass
<i>Isolepis nodosa</i>	Knobby Club Rush
<i>Microlaena stipoides</i>	Weeping Grass
<i>Poa affinis</i>	Poa

Weed species

Botanical Name	Common Name
<i>Androdera cordifolia</i>	Madiera Vine
<i>Brassica sp.</i>	Brassica
<i>Parietaria judaica</i>	Asthma Weed
<i>Tradescantia flumiensis.</i>	Trad
<i>Cynodon dactylon</i>	Couch grass
<i>Sonchus sp</i>	Sow thistle
<i>Solanum nigrum</i>	Blackberry nightshade

Map 1 – Site 1: Brett Park



Note: Area slopes down toward Henley Marine Dr

Map 2 – Site 2: Sisters Bay



Map 3 – Site 3: Thompson St

