

BUSHCARE SITE ACTION PLAN

Prince Edward Park, Cabarita

Site description – Prince Edward Park & Cabarita Park

Prince Edward Park is located in Phillip Street, Cabarita. The park contains a restaurant, BBQ area, a playground, native vegetation in public open space and along the foreshore boundary of the park. An area newly planted with locally indigenous species on the edge of the Saltmarsh by Bush regeneration Contractors is maintained by Bushcare Volunteers. Bushcare volunteers have been working removing weeds and planting local provenance plants.

Cabarita Park is located at End of Cabarita Road, Cabarita. Cabarita Park is one of the City of Canada Bay's showpiece parks. Located on the Parramatta River at Cabarita, the 10-hectare park features a heritage pavilion, ferry wharf, children's playground, picnic facilities, remnant bushland, a swimming centre, marina and restaurant, and grassy areas on which to enjoy the view of the river. The bushcare site is a narrow strip of saltmarsh vegetation. The bushcare volunteers remove exotic weeds such as *Sonchus sp.*, *Bidens pilosa*, *Couch* and *Ehrharta*.

Saltmarsh is listed as an Endangered Ecological Community under the *Threatened Species Act 1995*. The City of Canada Bay Council is working with Cabarita Bushcare to protect and enhance the Saltmarsh community.

In addition to work carried out by Bushcare Volunteers and Bush Regeneration contractors, City of Canada Bay Council Bushcare staff maintains existing vegetation as required.

Bushcare Guidelines

Bushcare Volunteers will work on this site once a month for 3 hours. Volunteers are to adhere to this action plan and are to be supervised by Council Bushcare at all times.

In order to participate Volunteers are required to have registered in the Canada Bay Council Bushcare program, follow Safe Work Method Statements and adhere to safe operating procedures. Canada Bay Councils insurance covers people between the ages of 10 and 90. Children under the age of 15 must be accompanied by their parents.

Objectives

The main objective of work carried out on this site is to increase biodiversity and manage Environmental and Noxious weeds as well as assist in creating habitat for fauna. Particular care must be taken during weeding to ensure over clearing does not occur.

Strategies – Prince Edward Park & Cabarita Park

- Work by Bushcare Volunteers and Bush Regeneration contractors to be carried out primarily in areas already worked.
- Work to be carried out from good to bad areas (Bradley Method).
- No new areas are to be worked unless strictly directed by City of Canada Bay Council (CCBC) Bushcare staff.
- Removal of weed seedlings to be carried out as required ensuring minimal disturbance to the soil or Saltmarsh community.
- Care should be taken when weeding not to remove significant Saltmarsh species (eg. *Tetragonia tetragonoides*, *Sarcocornia quinqueflora* and *Sporobolus virginicus*).
- Supplementary planting of local provenance (Lower Parramatta River) indigenous species to be carried out as required.
- Regular discussion and feedback to be carried out with Bushcare Volunteers regarding future directions for the Bushcare site.
- Bushcare Volunteers should be careful in areas around drains as these may be subject to high flow. These areas are very sensitive to disturbance.
- Rubbish to be removed as required.
- Existing vegetation in garden beds to be supplemented with indigenous planting.
- CCBC Bushcare staff to monitor and improve condition of existing Saltmarsh vegetation.
- CCBC Bushcare staff to monitor damage in Saltmarsh conservation zones.
- Annual weeds to be targeted prior to seeding.
- CCBC Bushcare staff to employ best practice management techniques for managing Saltmarsh vegetation.
- Plant hardy salt tolerant buffer to reduce damage to Saltmarsh vegetation.
- CCBC Bushcare staff to investigate effectiveness of salinisation as weed control technique.

Existing species list

Native Plants

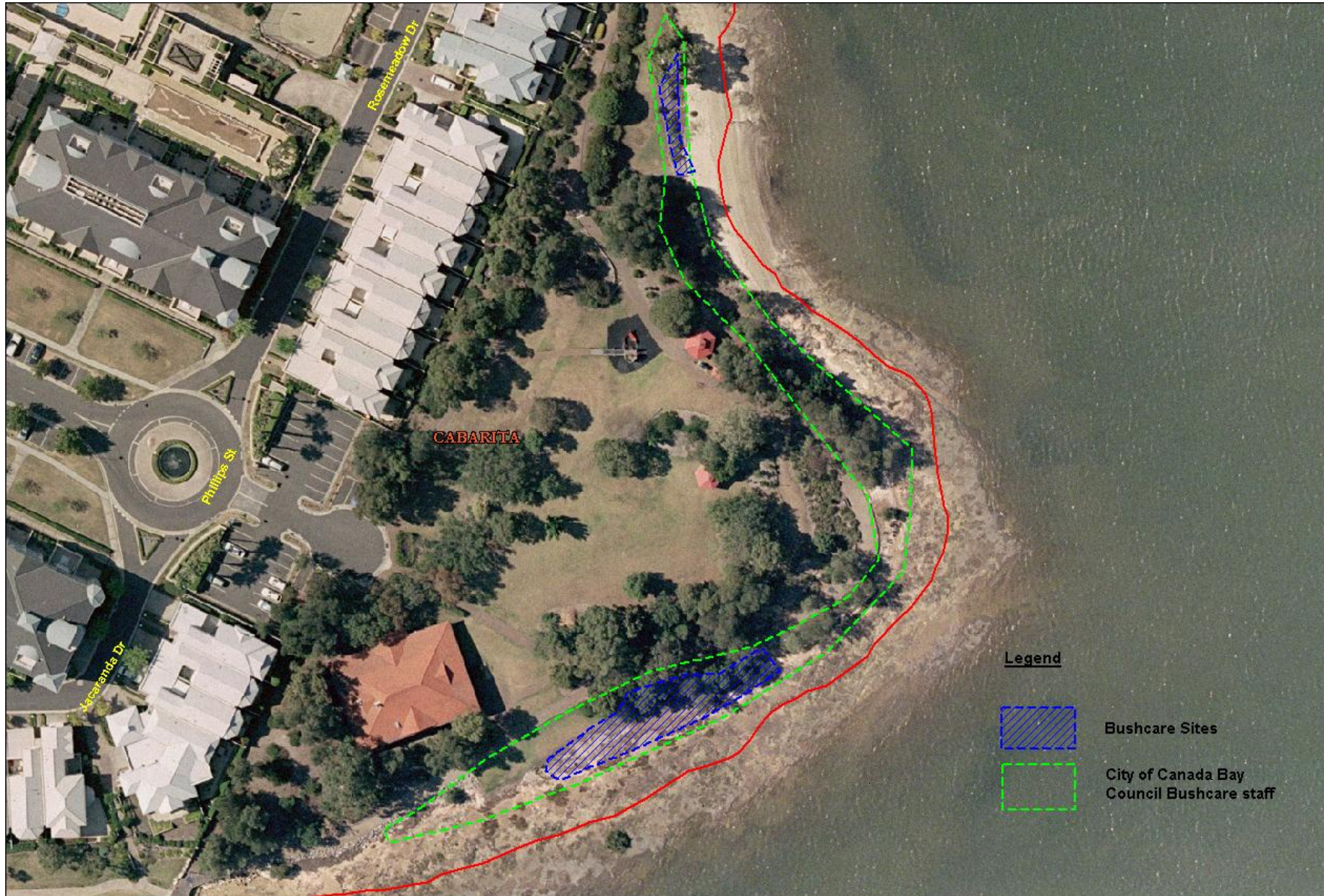
Botanical Name	Common Name
<i>Acacia longifolia</i>	Sydney Golden Wattle
<i>Acacia longifolia sophorae</i>	Coastal Wattle
<i>Cassuarina glauca</i>	Swamp Oak
<i>Corymbia gummifera</i>	Red Bloodwood
<i>Cymbapogon refractus</i>	Barbed Wire Grass
<i>Cyperus pollystachos</i>	Cyperus
<i>Dianella revolute</i>	Blue Flax Lily
<i>Dichondra repens</i>	Kidney Weed
<i>Dodonaea triquetra</i>	Native Hop Bush
<i>Eucalyptus tereticornis</i>	Forest Red Gum
<i>Imperata cylindrical</i>	Bladey Grass
<i>Juncus kraussii</i>	Sea Rush
<i>Juncus ussitatus</i>	Common Rush
<i>Lomandra longifolia</i>	Mat Rush
<i>Microlaena stipoides</i>	Weeping Grass
<i>Oplismenus</i>	Basket Grass
<i>Sarcocornia quinqueflora</i>	Samphire
<i>Spinifex sp.</i>	Spinifex
<i>Sporobolus sp.</i>	Salt Couch
<i>Sueada australis</i>	Austral Seablite
<i>Tetragonia tetragonoides</i>	Warrigal Greens
<i>Themeda triandra</i>	Kangaroo Grass
<i>Westringia fruticosa</i>	Coastal Rosemary

Existing species list

Weeds

Botanical Name	Common Name
<i>Androdera cordifolia</i>	Madeira Vine
<i>Bidens pilosa</i>	Bidens
<i>Bromus catharticus</i>	Bromus
<i>Conyza sp.</i>	Fleabane
<i>Cynodon dactylon</i>	Couch
<i>Kikuyu sp.</i>	Kikuyu
<i>Lolium perenne</i>	Lolium
<i>Nothoscordum gracile</i>	Onion Weed
<i>Paspalum sp.</i>	Paspalum
<i>Setaria pumila</i>	Pigeon Grass
<i>Sporobolus fertilis</i>	Giant Parramatta Grass

Prince Edward Park



Cabarita Park

